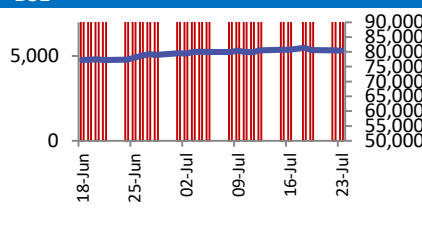
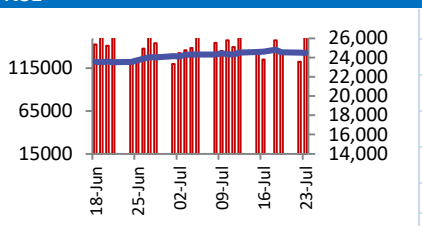


BSE		NSE																													
	<table border="1"> <tr><td>Open</td><td>80724</td></tr> <tr><td>High</td><td>80766</td></tr> <tr><td>Low</td><td>79224</td></tr> <tr><td>Close</td><td>80429</td></tr> <tr><td>Change</td><td>-73</td></tr> <tr><td>Volume (Lacs)</td><td>12589</td></tr> <tr><td>Turnover (Rs.inCr)</td><td>12456</td></tr> </table>	Open	80724	High	80766	Low	79224	Close	80429	Change	-73	Volume (Lacs)	12589	Turnover (Rs.inCr)	12456		<table border="1"> <tr><td>Open</td><td>24569</td></tr> <tr><td>High</td><td>24583</td></tr> <tr><td>Low</td><td>24074</td></tr> <tr><td>Close</td><td>24479</td></tr> <tr><td>Change</td><td>-30</td></tr> <tr><td>Volume(Lacs)</td><td>69434</td></tr> <tr><td>Turnover(Rs.in Cr)</td><td>169336</td></tr> </table>	Open	24569	High	24583	Low	24074	Close	24479	Change	-30	Volume(Lacs)	69434	Turnover(Rs.in Cr)	169336
Open	80724																														
High	80766																														
Low	79224																														
Close	80429																														
Change	-73																														
Volume (Lacs)	12589																														
Turnover (Rs.inCr)	12456																														
Open	24569																														
High	24583																														
Low	24074																														
Close	24479																														
Change	-30																														
Volume(Lacs)	69434																														
Turnover(Rs.in Cr)	169336																														

World Markets	Current	Previous	Pt. Chg	Var(%)
Dow	40358	40415	(57)	-0.1%
Dow Futures	40537	40615	(78)	-0.2%
Nasdaq	17997	18008	(10)	-0.1%
FTSE	8167	8199	(31)	-0.4%
Nikkei	39509	39594	(86)	-0.2%
Hang Seng	17381	17469	(89)	-0.5%
Gift Nifty	24396	24437	(41)	-0.2%
Straits Singapore	3458	3461	(4)	-0.1%
South Korea	2771	2774	(3)	-0.1%
Taiwan	22872	22257	615	2.8%
Shanghai	2910	2915	(5)	-0.2%

Commodity Prices	Current	Previous	Pt. Chg	Var(%)
Copper (\$/MT)	9166	9217	(50.5)	-0.5%
Alumin (\$/MT)	2295	2300	(4.5)	-0.2%
Zinc (\$/MT)	2689	2727	(38.0)	-1.4%
Brent Crude (\$/bbl)	81.4	81.0	0.4	0.5%
Gold (\$/Ounce)	2417	2410	7.1	0.3%
Silver (\$/Ounce)	29.3	29.2	0.1	0.2%
Light Crude (\$/bbl)	77.3	77.0	0.4	0.5%
N G (\$/mmbtu)	2.1	2.2	(0.0)	-2.0%
Sugar (\$/MT)	525.7	533.1	(7.4)	-1.4%
Rubber (Rs./kg)	213.0	211.0	2.0	0.9%
Baltic Dry Index	1869	1896	(27.0)	-1.4%

Currency Exchange Rate	Current	Previous	Var(%)
Rs./ \$ rate	83.70	83.67	0.04%
Rs./ Euro	90.77	90.96	-0.21%
Rs./ Chinese Yuan	11.50	11.51	-0.01%
Yen / \$ rate	155.13	155.59	-0.30%
\$ US/Euro	1.08	1.09	-0.08%

Dollar Index	Current	Previous	Var(%)
Dollar Index	105.26	105.28	-0.02%

Support/ Resistance Levels for Today		
	Nifty	Bank Nifty Fut
Support 1	24400	51550
Support 2	24330	51270
Resistance	24550	52150

Securities in Ban For Trade	
GNFC	INDIACEM
SAIL	

Market Review

US: U.S. stock index futures fell in evening deals on Tuesday, with technology stocks seeing renewed weakness after underwhelming second-quarter earnings from heavyweights Alphabet and Tesla.

Asia: Asian equities declined, following an unimpressive start to the earnings reports from the "Magnificent Seven" megacap technology companies.

India The domestic market indices ended marginally lower after the Union Budget 2024 was presented in the Lok Sabha. **Market is expected to open on a negative note and likely to witness range bound move during the day.**

Global Economy: Japanese manufacturing activity unexpectedly shrank in July, preliminary purchasing managers index, while the services sector rebounded on robust demand.

Singapore's key consumer price gauge rose 2.9% in June from a year earlier. The core inflation rate, which excludes private road transport and accommodation costs, was a notch lower than the 3.0% forecast in a Reuters poll of economists and compared with 3.1% seen in April and May. The central bank is widely expected to keep its monetary policy settings unchanged at a review on Friday given concerns about potential inflationary risks from geopolitical friction. Inflation in the Asian financial hub has been sticky. While it has cooled from a peak of 5.5% in early 2023, it had held above 3% until the June figure. Monetary Authority of Singapore (MAS) head Chia Der Jiun said last week that he expects core inflation to stay on its disinflation path and ease more significantly in Q4 this year.

Commodities Gold prices struggled for momentum on Wednesday, with investors awaiting U.S. economic data that could influence the Federal Reserve's rate-cut timeline.

Oil prices rose in Asian trade on Wednesday, recovering mildly from recent losses as expectations of tight near-term markets were furthered by industry data showing a draw in U.S. inventories.

Currency The U.S. dollar was broadly firm, with traders watching out for an inflation reading on Friday and Federal Reserve meeting next week. The Bank of Japan is also due to meet next week, where a 10 basis point hike is priced at a 44% chance.

FII Derivative Transactions (Rs. Cr)

Contracts	Purchase		Sell		Net	Open Interest (OI)		OI (Previous day)		Change	
	Contract	Value	Contract	Value		Contract	Value	Contract	Value	Contract	Value
Index Future	136212	8839	190983	12498	(3659)	599971	38093	615734	39221	(15763)	(1128)
Index Option	43344198	3471916	43398641	3471692	224	6152481	408445	5368395	362227	784086	46218
Stock Future	1746992	135290	1826106	141464	(6174)	4246336	326052	4284282	330050	(37946)	(3998)
Stock Option	1045955	80308	1016621	78165	2143	692924	54411	781302	61188	(88378)	(6777)
Total	46273357	3696353	46432351	3703819	(7466)	11691712	827001	11049713	792686	641999	34315

FII All Activity-BBG (Rs Cr)	Buy	Sell	Net
15-Jul-24	15686	12348	3338
16-Jul-24	14975	13314	1661
18-Jul-24	25438	20385	5053
19-Jul-24	16143	14319	1824
20-Jul-24	21445	13099	8347
Month to date- July	217470	188252	29218
FII (Prov.) (Rs Cr)	Buy	Sell	Net
16-Jul-24	14482	13211	1271
18-Jul-24	25521	20037	5484
19-Jul-24	15893	14386	1506
22-Jul-24	16970	13526	3444
23-Jul-24	14331	17306	(2975)
Month to date-July	255066	232933	22133
DII (Prov.) (Rs. Cr)	Buy	Sell	Net
16-Jul-24	14936	15465	(529)
18-Jul-24	15676	18581	(2904)
19-Jul-24	15051	15513	(462)
22-Jul-24	13553	15205	(1652)
23-Jul-24	17799	16381	1419
Month to date-July	234030	233485	546
FII Debt - BBG (Rs. Cr)	Buy	Sell	Net
15-Jul-24	1371	1076	295
16-Jul-24	1730	453	1277
18-Jul-24	3751	819	2932
19-Jul-24	2375	785	1590
20-Jul-24	2375	2339	36
Month to date- July	26618	13663	12956

Market Breadth	BSE		NSE	
	No.	%	No.	%
Advance	1680	42%	1061	39%
Decline	2223	55%	1592	59%
Unchanged	113	3%	64	2%

Market Turnover	23-Jul	22-Jul	Var (%)
BSE Cash	12456	9074	37%
NSE Cash	169336	122367	38%
NSE Futures	477794	350000	37%
NSE Options	53183162	29640926	79%
Total (Rs.Cr)	53842749	30122367	79%

Volatility Index	23-Jul	22-Jul
Volatility Index	12.75	15.44

Index PE - TTM	23-Jul	Yr. High	Yr. Low
Sensex	24.0	26.0	21.8
Nifty	23.1	28.8	20.3

Corporate News

Reliance Capital resolution case: NCLT directs IHL to deposit the equity amount in escrow account

The bankruptcy court in Mumbai directed the successful bidder of Reliance Capital, Hinduja group-owned IndusInd International Holdings to deposit the equity amount of Rs 2,750 crore into the escrow account by July 31. (BS)

CEAT lines up ₹1k-cr capex in FY25, flags margin woes

RPG Group's CEAT has a ₹1,000 crore capex to counter rising natural rubber and freight costs, with staggered 1.5-2.5% price hikes and an additional 5-6% expected. Margins dropped 300 basis points in June and remain pressured in the second quarter. Investments improve R&D, IT, and factory efficiency, expand specialty tyres at Chennai and Ambarnath, and de-bottleneck Halol. (ET)

MMT clocks highest ever gross bookings in Q1FY25

Speaking at the earnings call, Rajesh Magow, group CEO of MakeMyTrip said its gross booking value for quarter one was more than \$2.4 bn, with growth at 22% year on year in constant currency terms, and the adjusted operating profit was \$39.1 mn registering a growth of 30% year on year. (NDTV)

Economy

Budget 2024: Government seeks to script long-term India growth story

Sitharaman's seventh budget stresses growth and fiscal discipline, projecting a 4.9% FY25 deficit and a 17% capex rise. Key areas include state support, youth employment, women's participation, agriculture, social welfare, private capex, Digital Public Infrastructure, RBI dividend, employment-linked incentives, lower individual tax burden, skilled workforce.(ET)

International

Tesla profit margins worst in five years as price cuts, incentives weigh

Tesla reported its lowest profit margin in more than five years and missed Wall Street earnings targets in the second quarter, as the electric vehicle maker cut prices to revive demand while it increased spending on AI projects. The company said it was on track to produce new vehicles, including more affordable models, in the first half of 2025, although the models will result in achieving less cost reduction than previously expected. Shares fell 8% in after-hours trade. (Inv)

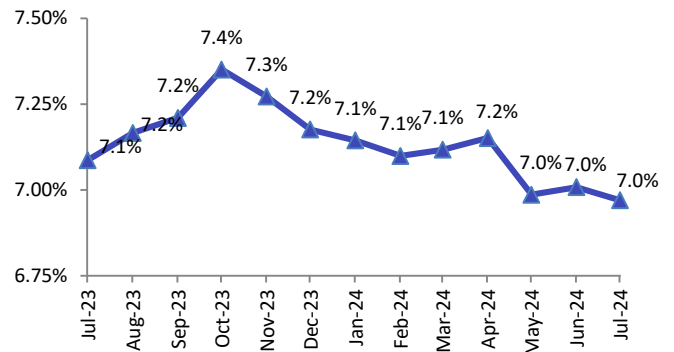
Top 5 Nifty Gainers	23-Jul	22-Jul	Var(%)
TITAN	3467	3254	6.5%
ITC	492	467	5.5%
TATACONSUM	1257	1205	4.3%
ADANI PORTS	1507	1467	2.7%
NTPC	382	374	2.4%
Top 5 Nifty Losers	23-Jul	22-Jul	Var(%)
SHRIRAMFIN	2739	2827	-3.1%
LT	3538	3651	-3.1%
HINDALCO	654	672	-2.8%
BAJFINANCE	6727	6884	-2.3%
ONGC	314	321	-2.1%

BSE Index Watch	Last	1 day	1 wk	1 mth	1 yr
SENSEX	80429	-0.1%	-0.4%	4.0%	21.2%
MIDCAP	46504	-0.7%	-2.8%	0.8%	56.9%
SMLCAP	52823	-0.2%	-2.7%	1.4%	54.6%
AUTO	57265	0.2%	-0.9%	-0.4%	59.9%
BANKEX	59354	-1.1%	-1.6%	1.1%	14.5%
Capital Goods	71199	-2.0%	-4.4%	-1.8%	66.6%
FMCG	22546	2.5%	2.7%	10.2%	18.7%
Health Care	38741	0.6%	0.0%	5.5%	44.6%
IT	40927	0.8%	2.4%	13.2%	35.9%
METAL	31534	-1.0%	-5.0%	-5.7%	49.7%
Oil & Gas	30367	-1.3%	-4.3%	5.7%	57.6%
Power	7824	-0.2%	-2.9%	-1.2%	93.2%
Realty	8330	-2.1%	-5.3%	-6.1%	93.7%

NSE USD Futures	23-Jul	22-Jul	Var (%)
July Expiry (Rs./\$)	83.65	83.65	0.0%
August Expiry (Rs./\$)	83.73	83.68	0.1%
Total Turnover (Rs. Crore)	2880	3807	-24%

Sectors	TTM PE
Auto	33.96
Auto Ancillary	52.28
Banking	15.46
Engineering	43.69
Cement	74.79
Diamonds & Jewellery	62
Housing Finance	25.29
Infrastructure & Const	34.62
Metals-Aluminium	43.38
Metal – Steel	18.73
Oil Expl.	16.52
Pharma	11.71
Power – Gen. Supp.	42.53
Information Tech.	24.92
Sugar	19.78
Telecom Serv. Prov.	88.63
Tyres	28.21

India 10 year bond yield (Source: BBG)



10 year G-Sec Yield	Current	Previous	Change
US	4.25%	4.25%	0 bps
Japan	1.07%	1.07%	1 bps
India	6.97%	6.97%	0 bps
UK	4.12%	4.16%	(4) bps
Libor 3 Mths	5.54%	5.54%	0 bps

Indian Eco Data	Current	Previous	Var(%)
Forex Reserve (US\$ in bn)	654	652	0.3%
Inflation - WPI	3.36%	2.61%	75 bps
Inflation - CPI	5.08%	4.80%	28 bps

India GDP	Q4FY24	Q3FY24	Var(%)
Growth	7.76%	8.57%	(81) bps

Monetary Policy	Current	Previous	Change
Repo Rate	6.50%	6.50%	0 bps
Reverse Repo Rate	3.35%	3.35%	0 bps
CRR	4.50%	4.50%	0 bps
O/S Banking System Liquidity (Rs bn)	260	946	(686.1)

IIP Growth %	Jan-24	Jan-23	Apr-Feb
IIP	5.9	5.7	6.2
Mining	5.9	9.0	8.5
Manufacturing	3.2	4.5	5.7
Electricity	5.6	12.7	7.0

ADR Price Movement

Company	Price (US\$)	Volume	Previous Day Price	Volume	Variance (%)	No. of Share Per ADR	ADR Price (Rs.)	BSE Price	Variance (%)
Infosys Tech	22.08	9992282	21.79	8459653	1.33%	1	1848.04	1836.90	0.6%
Wipro	5.96	2007122	6.00	3459482	-0.67%	1	498.84	500.55	-0.3%
Dr.Reddy's	80.90	175202	80.07	201793	1.04%	1	6771.13	6865.00	-1.4%
ICICI Bank	29.11	3815082	29.36	3183272	-0.85%	2	1218.22	1226.75	-0.7%
HDFC Bank	60.54	1988927	60.77	2288824	-0.38%	3	1689.02	1618.40	4.4%

GDR's (US\$)

	Prices	Prev. Close	Change	Var %
L&T	42.40	44.10	(1.7)	-3.9%
RIL	71.00	71.90	(0.9)	-1.3%
SBI	103.00	104.40	(1.4)	-1.3%

US Economy Data

	Current	Previous
Inflation (YoY)	3.00%	3.30%
Unemployment (%)	4.10%	4.00%

Interest Rate (%)

	Current	Previous
Fed Rate	5.50%	5.50%

US GDP

	Q1CY24	Q4CY23	Q4CY22
Growth (QoQ Annualized)	1.40%	3.40%	2.60%

China Economy Data

	Current	Previous
GDP	4.70%	5.30%
Inflation – CPI (%)	0.20%	0.30%

Economic Calendar

	Date
Indian GDP Data	30 Aug
Indian Inflation Data CPI	12 Aug
Indian Inflation Data WPI	14 Aug
Indian Monetary Policy	08 Aug
India's Industrial Production (IIP)	12 Aug
US Inflation Data	14 Aug
US GDP	25 Jul
US Unemployment Data	02 Aug
US Fed Rate	31 Jul
China GDP	18 Oct
China Inflation Data	9 Aug

Event Update

Name	Date	Purpose
Tembo Global Industries Ltd.	23-07-24	Dividend
Fortis Healthcare Ltd.	24-07-24	Rs.1.00 per share(10%)Final Dividend
Fortis Malar Hospitals Ltd.	24-07-24	Rs.2.50 per share(25%)Final Dividend
Hatsun Agro Product Ltd.	24-07-24	Rs.6.00 per share(600%)First Interim Dividend
Honeywell Automation India Ltd.	24-07-24	Rs.100.00 per share(1000%)Final Dividend
Bhansali Engineering Polymers Ltd.	25-07-24	Rs.1.00 per share(100%)First Interim Dividend
KSB Ltd.	25-07-24	Stock Split from Rs.10/- to Rs.2/-
Pradeep Metals Ltd.	25-07-24	Rs.2.00 per share(20%)Final Dividend
21st Century Management Services Ltd.	26-07-24	Rs.2.50 per share(25%)Final Dividend
Aarti Industries Ltd.	26-07-24	Rs.1.00 per share(20%)Final Dividend
Aarvi Encon Ltd.	26-07-24	Dividend
ADF Foods Ltd.	26-07-24	Rs.1.20 per share(60%)Final Dividend
Bondada Engineering Ltd.	26-07-24	Rs.0.15 per share(1.5%)Final Dividend
Coromandel International Ltd.	26-07-24	Rs.6.00 per share(600%)Final Dividend
CreditAccess Grameen Ltd.	26-07-24	Rs.10.00 per share(100%)Final Dividend
Galaxy Surfactants Ltd.	26-07-24	Rs.22.00 per share(220%)Final Dividend
Infobeans Technologies Ltd.	26-07-24	Rs.1.00 per share(10%)Final Dividend
Kirloskar Brothers Ltd.	26-07-24	Rs.6.00 per share(300%)Final Dividend
Mangalam Global Enterprise Ltd.	26-07-24	Dividend
Menon Bearings Ltd.	26-07-24	Interim Dividend
Nitta Gelatin India Ltd.	26-07-24	Rs.6.00 per share(60%)Dividend
Paushak Ltd.	26-07-24	Rs.20.00 per share(200%)Final Dividend
Power Finance Corporation Ltd.	26-07-24	Rs.2.50 per share(25%)Final Dividend
Rane Holdings Ltd.	26-07-24	Rs.25.00 per share(250%)Final Dividend
RBL Bank Ltd.	26-07-24	Rs.1.50 per share(15%)Dividend

Bulk Deal As On 23/07/24

BSE

Security Code	Security Name	Client Name	Deal	Quantity	Price
544213	ACLD	MANSI SHARE & STOCK ADVISORS PRIVATE LIMITED	S	117600	181.5
544213	ACLD	TRADELINK EXIM INDIA PVT LTD	B	118800	181.33
542865	ANUROOP	ASHOK KUMAR LAL	S	60000	31.37
542865	ANUROOP	ASHOK KUMAR LAL	B	60000	31.03
542865	ANUROOP	DILIP NANJI CHHEDA	S	174822	32.28
542865	ANUROOP	VCAP MONEY FINANCIAL SERVICES PRIVATE LIMITED	S	61690	31.03
542865	ANUROOP	VCAP MONEY FINANCIAL SERVICES PRIVATE LIMITED	B	61690	31.36
513401	ASHIS	SHYAM DHANUKA	S	108000	51.33
504340	CONFINT	VINEET CHOWDHURY	B	96000	7.87
530407	EPIC	GREEN PEAKS ENTERPRISES LLP	S	72598	21.12
530407	EPIC	MULTIPLIER SHARE & STOCK ADVISORS PRIVATE LIMITED	S	64611	20.3
530407	EPIC	MULTIPLIER SHARE & STOCK ADVISORS PRIVATE LIMITED	B	40000	21.12
530407	EPIC	RUCHIRA GOYAL	S	70000	20.3
530407	EPIC	RUCHIRA GOYAL	B	15000	21.12
540190	FRANKLININD	MULTIPLIER SHARE & STOCK ADVISORS PRIVATE LIMITED	S	6733920	3.44
540190	FRANKLININD	VANDANATIWARI	S	1243300	3.45
532042	FRONTCORP	EPITOME TRADING AND INVESTMENTS	B	28030	58.6
544199	GEMENVIRO	MANSI SHARE & STOCK ADVISORS PRIVATE LIMITED	S	164800	252.41
544199	GEMENVIRO	MANSI SHARE & STOCK ADVISORS PRIVATE LIMITED	B	184000	256.52
544199	GEMENVIRO	SAHASTRAA ADVISORS PRIVATE LIMITED	S	243200	254.5
544199	GEMENVIRO	SAHASTRAA ADVISORS PRIVATE LIMITED	B	243200	252.65
544199	GEMENVIRO	SOHAM FINCARE INDIA LLP	S	148800	255.78
544199	GEMENVIRO	SOHAM FINCARE INDIA LLP	B	158400	255.31
543538	GOEL	SHERWOOD SECURITIES PVT LTD	S	35200	174.68
540377	IFL	PRAFUL GUPTAKAUSHAL	S	6913860	1.2
539449	IGCIL	ANAND MOHAN	B	58000	37.38
539449	IGCIL	GAYATHIRADHAKRISHNAN	B	59325	37.59
539449	IGCIL	JR SEAMLESS PRIVATE LIMITED	S	100000	36.92
539449	IGCIL	MANUBHAI AMRUTLAL SHAH	S	193674	36.93
539449	IGCIL	MULTIPLIER SHARE & STOCK ADVISORS PRIVATE LIMITED	B	24431	37
539449	IGCIL	NARAYANAN BALAJI VAIDYANATH	B	15000	36.92
539449	IGCIL	PATEL MADHUBEN DAHYABHAI	S	44431	36.96
539449	IGCIL	RAMASWAMY ANAND	B	100000	37.31
539449	IGCIL	SADASHIVAMURTHY ANURADHA	B	100000	36.92
536709	INDRENEW	SUVAMDAS	S	150000	14.7
535730	KHOBSURAT	ANKIT MAHENDRABHAI PARLESHA	S	12000000	1.63
535730	KHOBSURAT	SHREYANS SHANTILAL SHAH	B	2500000	1.63
535730	KHOBSURAT	VICKY RAJESH JHAVERI	S	2500000	1.63
544188	MAGENTA	NILESH BABULAL KABRA	B	48000	39
544188	MAGENTA	SUNFLOWER BROKING PRIVATE LIMITED	S	44000	39
538895	MIHIKA	VAKANDA SERVICES PRIVATE LIMITED	S	51377	23.99
530167	MONGIPA	KANCHAN SARAOGI	S	34854	54.14
543207	NATURAL	HEMA JAYPRAKASH BHAVSAR	S	132607	11.67
543207	NATURAL	ROOPESH TALWAR	B	87329	11.5
530557	NCLRESE	TOPGAIN FINANCE PRIVATE LIMITED	S	7722454	0.94
530557	NCLRESE	TOPGAIN FINANCE PRIVATE LIMITED	B	300000	0.95
530095	PRADHIN	AMEE TUSHAR SHAH	S	59151	47.38
530095	PRADHIN	KAPADIA FINWEALTH LLP .	S	73763	47.43

530095	PRADHIN	NISHIL FINANCIAL ADVISORS LLP .	S	67600	47.91
530095	PRADHIN	NISHIL SHAH	S	23923	48.16
530095	PRADHIN	PREETI BHAUKA	B	40000	52.36
530095	PRADHIN	SANJAYKUMAR SEVANTILAL SHAH	S	58395	47.38
530095	PRADHIN	SETU SECURITIES PVT. LTD.	S	1486	47.79
530095	PRADHIN	SETU SECURITIES PVT. LTD.	B	158208	47.8
531893	SAWABUSI	SHUBHAM ASHOKBHAI PATEL	S	3819946	0.67
531893	SAWABUSI	VIKRAMBHAI GOKALBHAI CHAUDHARI	S	6198340	0.66
544165	SHIVAM	MEHUL KISHORE JOSHI	B	102000	60.97
543924	SONALIS	SANDESH KHANDELWAL	S	10000	72.47
539217	SRESTHA	SAROJ GUPTA	B	5500000	2.27
539217	SRESTHA	YASH BIPINBHAI NATHWANI (HUF)	S	6412656	2.27
543274	SUUMAYA	VATSALKUMAR PRAVINCHANDRA PATEL	S	139500	4.31
543274	SUUMAYA	VINABHEN ATULKUMAR SHAH	B	225000	4.32
543745	SVS	VIKRAM JAIN	B	2118000	12.51
543745	SVS	YELLOWSTONE VENTURES LLP	S	2046000	12.51
544214	THREEMPAPE	AVANCE VENTURES PRIVATE LIMITED	B	100000	75.81
544214	THREEMPAPE	MANSI SHARE & STOCK ADVISORS PRIVATE LIMITED	B	100000	76.3
544214	THREEMPAPE	MULTIPLIER SHARE & STOCK ADVISORS PRIVATE LIMITED	S	160000	79.88
539040	TTIL	KAUSHAL HITESHBHAI PARIKH	S	280000	21.93
539040	TTIL	SEIFER RICHARD MASCARENHAS	S	297566	21.93
544002	VIVAA	ARYAFIN-TRADE SERVICES INDIA PRIVATE LIMITED	B	20000	41
509026	VJTFEDU	SAM FINANCIAL SERVICES LLP	S	250000	90
509026	VJTFEDU	SHEETAL DUGAR	B	124797	90
509026	VJTFEDU	VINOD DUGAR	B	125000	90
503675	WAGEND	VASUDEVAN	S	268566	1.27
538382	WESTLEIRES	NEW LEAINA INVESTMENTS LIMITED	S	22408	174.91
514378	YARNSYN	MAKWANA DIXIT CHANDUBHAI	B	20000	52

NSE

Security Code	Security Name	Client Name	Deal	Quantity	Price
AGRITECH	Agri-Tech (India) Limited	ABHINAV KATHURIA	BUY	70000	229.61
AGRITECH	Agri-Tech (India) Limited	INDRA KIRAN VENTURES	BUY	30000	234.15
ELGIEQUIP	Elgi Equipments Ltd	AL MEHWAR COMMERCIAL INVESTMENTS L.L.C.	SELL	2297777	673
GICL	Globe Int'l Carriers Ltd	MAHEVARSH FINCON PRIVATE LIMITED	SELL	189000	61.9
GICL	Globe Int'l Carriers Ltd	YUVRAJ HIRALAL MALHOTRA	BUY	285000	61.6
GLOBE	Globe Tex tiles (I) Ltd.	GADARA POONAM	SELL	1670567	5.01
GLOBE	Globe Tex tiles (I) Ltd.	JAIDEEP SAMPAT	BUY	1779744	5
KSHITJPOL	Kshitij Poly line Limited	EV PERUMALSWAMI AND ASSOCIATES	SELL	271064	8.58
KSHITJPOL	Kshitij Poly line Limited	PRABHU LAL MEENA	SELL	422250	8.58
NIRMAN	Nirman Agri Genetics Ltd	SHISHIR RADHAKUMAR TEJPAL	SELL	31200	417.22
PROPEQUITY	P. E. Analytics Limited	JASUJA SAMIR	SELL	99000	296.82
SAKUMA	Sakuma Exports Limited	BSEL ALGO LIMITED	BUY	2000000	29.51
SILKFLEX	Silkfex Polymers India L	AMRUTLAL GORDHANDAS THOBHANI	SELL	140000	66
SILKFLEX	Silkfex Polymers India L	CAIFU INVESTMENT ADVISORY LLP	SELL	104000	66.01
SILKFLEX	Silkfex Polymers India L	JIGNESH AMRUTLAL THOBHANI	SELL	132000	66
TUNWAL	Tunwal E-Motors Limited	GIRIJADHAVA VYAPAAR PRIVATE LIMITED	BUY	1450000	64
TUNWAL	Tunwal E-Motors Limited	GIRIRAJ STOCK BROKING PRIVATE LIMITED	SELL	490000	61.45
TUNWAL	Tunwal E-Motors Limited	NIKUNJ STOCK BROKERS LTD	SELL	400000	64
VISHWAS	Vishwas Agri Seeds Ltd	VANDANA ATUL AGARWAL	BUY	168000	83.35

Disclosure:

Research Reports that are published by Nirmal Bang Securities Private Limited (hereinafter referred to as "NBSPL") are for private circulation only. NBSPL is a registered Research Analyst under SEBI (Research Analyst) Regulations, 2014 having Registration no. INH000001766. NBSPL is also a registered Stock Broker with National Stock Exchange of India Limited, BSE Limited, Metropolitan Stock Exchange of India Limited, Multi Commodity Exchange of India Limited and , National Commodity and Derivative Exchange Limited in Capital Market , Equity and Commodities derivatives segments and Currency Derivatives Segment .

NBSPL has other business divisions with independent research teams separated by Chinese walls, and therefore may, at times, have different or contrary views on stocks and markets.

NBSPL or its associates have not been debarred / suspended by SEBI or any other regulatory authority for accessing / dealing in securities Market since last 20 years. NBSPL, its associates or analyst or his relatives do not hold any financial interest (Except Investment) in the subject company. NBSPL or its associates or Analyst do not have any conflict or material conflict of interest at the time of publication of the research report with the subject company. NBSPL or its associates or Analyst or his relatives may or may not hold beneficial ownership of 1% or more in the subject company at the end of the month immediately preceding the date of publication of this research report.

NBSPL or its associates / analyst has not received any compensation / managed or co-managed public offering of securities of the company covered by Analyst during the past twelve months. NBSPL or its associates have not received any compensation or other benefits from the company covered by Analyst or third party in connection with the research report. Analyst has not served as an officer, director or employee of Subject Company. NBSPL / analyst has not been engaged in market making activity of the subject company.

Analyst Certification: The research analysts and authors of these reports, hereby certify that the views expressed in this research report accurately reflects my/our personal views about the subject securities, issuers, products, sectors or industries. It is also certified that no part of the compensation of the analyst(s) was, is, or will be directly or indirectly related to the inclusion of specific recommendations or views in this research. The analyst(s) principally responsible for the preparation of this research report and has taken reasonable care to achieve and maintain independence and objectivity in making any recommendations.

Disclaimer:

The Research Report is for the personal information of the authorized recipient and does not construe to be any investment, legal or taxation advice. NBSPL is not soliciting any action based upon it. Nothing in the research report shall be construed as a solicitation to buy or sell any security or product, or to engage in or refrain from engaging in any such transaction. In preparing the research report, we did not take into account the investment objectives, financial situation and particular needs of the reader.

The research report has been prepared for the general use of the clients of NBSPL and must not be copied, either in whole or in part, or distributed or redistributed to any other person in any form. If you are not the intended recipient you must not use or disclose the information in the research report in any way. Though disseminated to all the customers simultaneously, not all customers may receive the research report at the same time. NBSPL will not treat recipients as customers by virtue of their receiving the research report. The research report is not directed or intended for distribution to or use by any person or entity resident in a state, country or any jurisdiction, where such distribution, publication, availability or use would be contrary to law, regulation or which would subject NBSPL & its group companies to registration or licensing requirements within such jurisdictions.

The report is based on the information obtained from sources believed to be reliable, but we do not make any representation or warranty that it is accurate, complete or up-to-date and it should not be relied upon as such. We accept no obligation to correct or update the information or opinions in it. NBSPL or any of its affiliates or employees shall not be in any way responsible for any loss or damage that may arise to any person from any inadvertent error in the information contained in the research report. NBSPL or any of its affiliates or employees do not provide, at any time, any express or implied warranty of any kind, regarding any matter pertaining to this report, including without limitation the implied warranties of merchantability, fitness for a particular purpose, and non-infringement. The recipients of the research report should rely on their own investigations.

This information is subject to change without any prior notice. NBSPL reserves its absolute discretion and right to make or refrain from making modifications and alterations to this statement from time to time. Nevertheless, NBSPL is committed to providing independent and transparent recommendations to its clients, and would be happy to provide information in response to specific client queries.

Before making an investment decision on the basis of research report, the reader needs to consider, with or without the assistance of an adviser, whether the advice is appropriate in light of their particular investment needs, objectives and financial circumstances. There are risks involved in securities trading. The price of securities can and does fluctuate, and an individual security may even become valueless. International investors are reminded of the additional risks inherent in international investments, such as currency fluctuations and international stock market or economic conditions, which may adversely affect the value of the investment. Opinions expressed are subject to change without any notice. Neither the company nor the director or the employees of NBSPL accept any liability whatsoever for any direct, indirect, consequential or other loss arising from any use of the research report and/or further communication in relation to the research report. Here it may be noted that neither NBSPL, nor its directors, employees, agents or representatives shall be liable for any damages whether direct or indirect, incidental, special or consequential including lost revenue or lost profit that may arise from or in connection with the use of the information contained in the research report.

Copyright of this document vests exclusively with NBSPL.

Our reports are also available on our website

Registration granted by SEBI and certification from NISM in no way guarantee performance of NBSPL or provide any assurance of returns to investors.

Nirmal Bang Research (Division of Nirmal Bang Securities Pvt. Ltd.)

B-2, 301/302, Marathon Innova,
Opp. Peninsula Corporate Park
Off. Ganpatrao Kadam Marg
Lower Parel(W), Mumbai-400013
Board No. : 91 22 6723 8000/8001
Fax. : 022 6723 8010